

Statistics Canada's major education report

Summary Public School Indicators for the Provinces and Territories, 1998/1999 to 2004/2005

Statistics Canada's Centre for Education Statistics has released its summaries (counts) of enrollments, graduates, educators, student-educator ratios, and spending in Canada.

The following has been extracted from that document which can be found on the Statistics Canada website in their very extensive education section.

This is an annual report generally released at the end of August.
www.statcan.ca/bsolc/english/bsolc?catno=81-595-M2007050

Some considerations:

1. The Northwest Territories, Yukon and Nunavut have been excluded from some of the comparisons as, due to the size of their regions and small population have data that is vastly different from the rest of Canada.
2. Canadian numbers are averaged from the provincial numbers and thus will not be found in the original Statistics Canada document.
3. Please compare this document to the InfoPick comparing Canadian academic ranking in the PISA (Programme for International Student Assessment) produced by the OECD (Organisation for Economic Cooperation and Development) which finds Canadian students ranking among the highest in the world. Note also the fact that Canada spends less than most countries that achieve lower results, and less than the few countries that rank higher. Furthermore, the countries achieving higher are smaller than Newfoundland and have a homogenous population.
4. For those readers outside the school board system, note that school boards make most of the decisions regarding expenditures. For example: educator costs are an indication of the programming choices made by school boards to meet the needs of communities; Capital costs are, for example, indications of decisions to open or close schools to ensure maximum efficiencies while offering as much choice as possible.

Quick facts:

- Enrollment is decreasing in all provinces except in Alberta and Ontario.
- Much of the decreases are due to migration. However, there is an overall national decline attributable to an aging population.
- Spending increased at a fairly steady rate throughout Canada, except in Ontario which experienced a noticeable dip from 1999 until 2003 when it increased again.
- However, as a percentage of total provincial expenditures, Ontario generally ranks the highest.
- Recently, Newfoundland injected significant amounts in education – not noted in this report.
- There were slightly more males than females enrolled in Canadian public schools in 2004/2005, with 51.4% of enrolments consisting of males.
- Total spending increased faster than inflation rising by 24.6% in the past seven years, from \$35.7 billion in 1998/1999 to \$44.5 billion in 2004/2005.
- Inflation rose 15% during the same time frame.

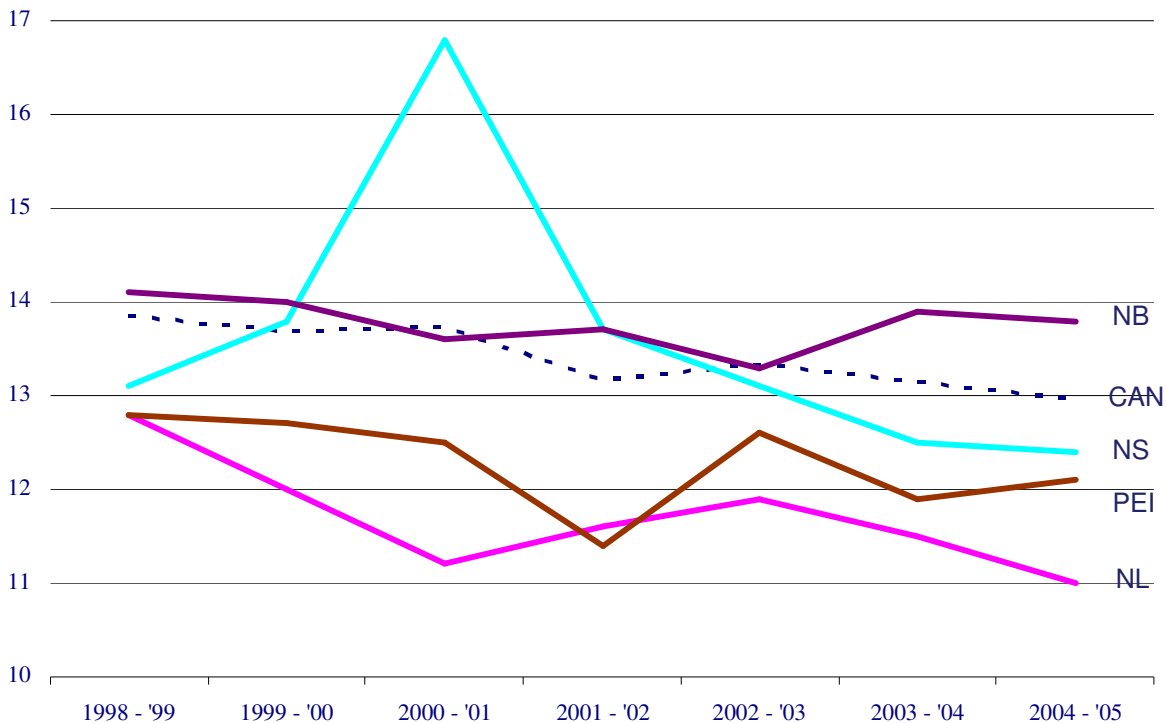
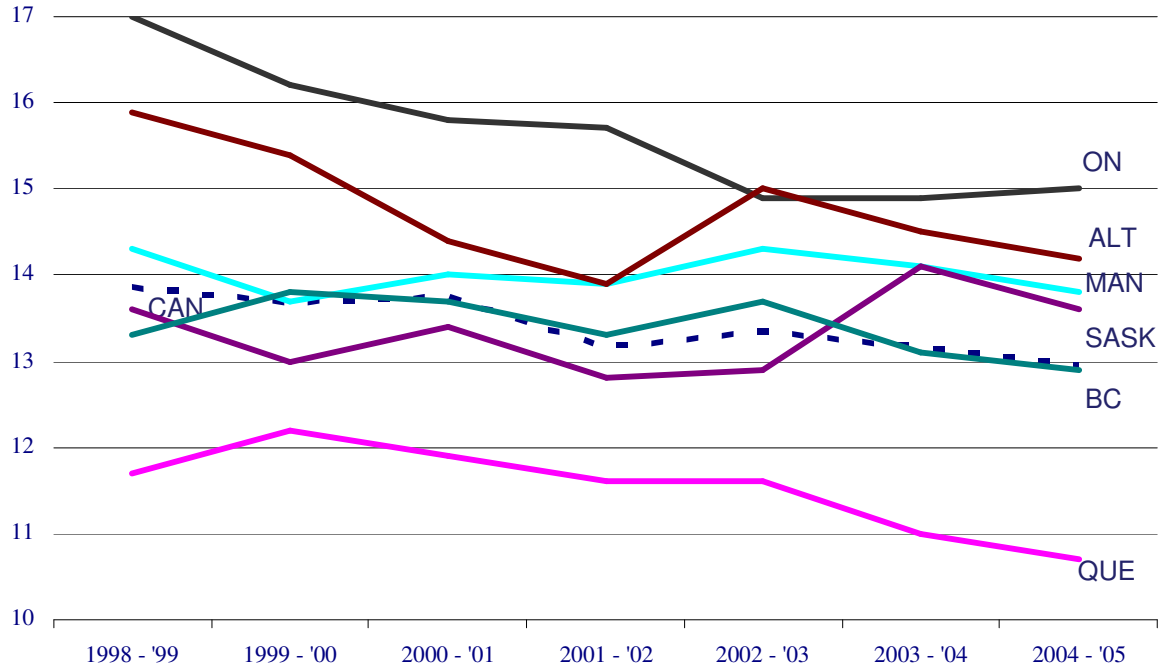
Patricia Parulekar, National Director
September 7, 2007
Ottawa



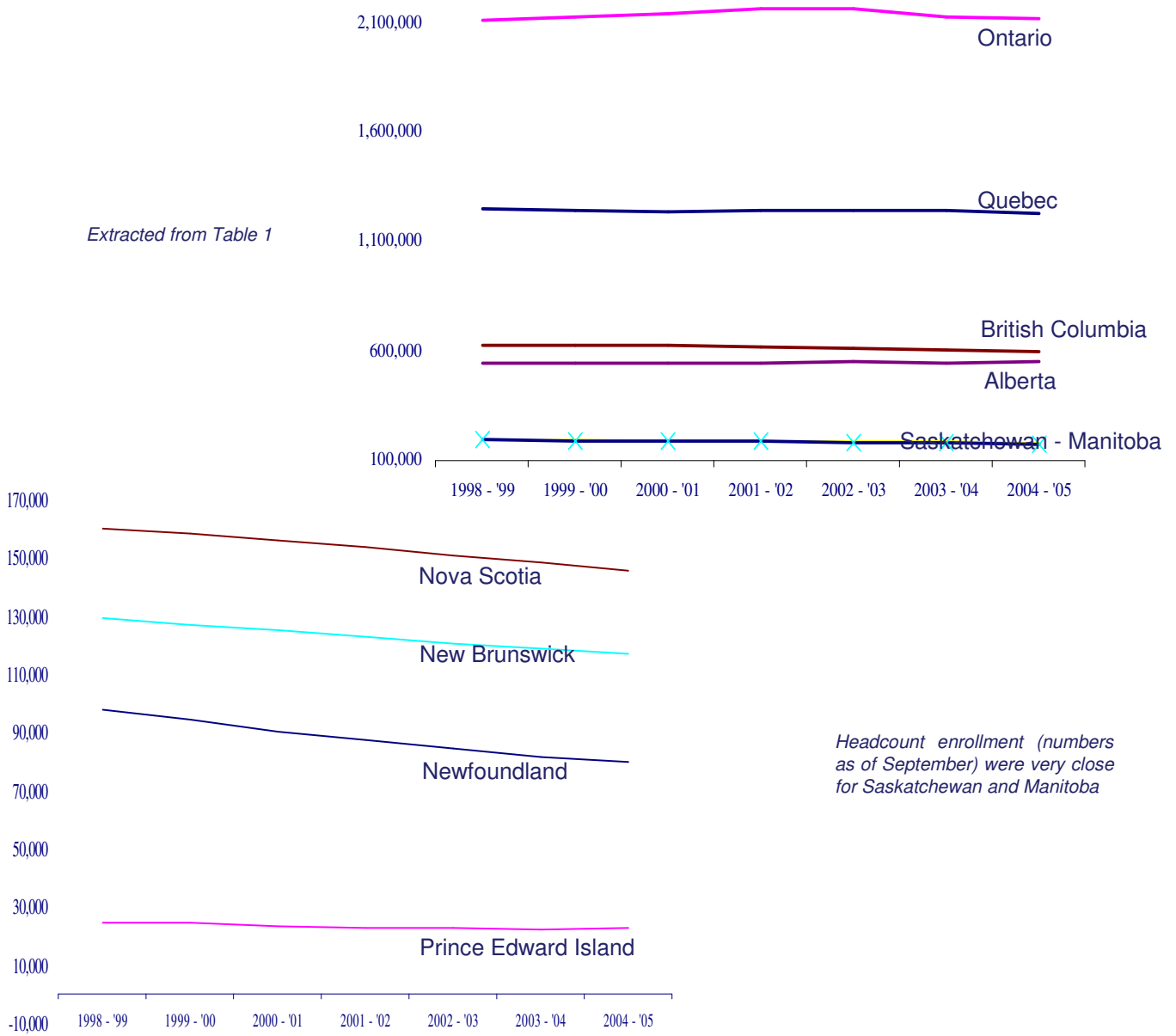
Summary Public School Indicators for the Provinces and Territories, 1998/1999 to 2004/2005 (cont)

Total K-12 expenditures as a % total expenditures by provincial and local governments

Extracted from Table 25



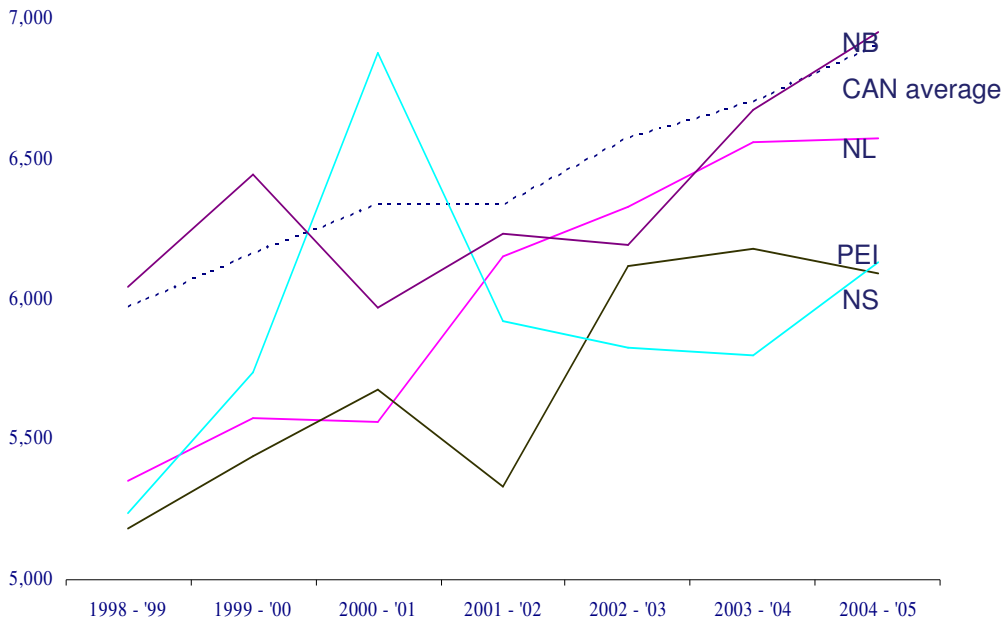
Headcount Enrollment – K-12



Year	N.L.	P.E.I.	N.S.	N.B.	Que.	Ont. ²	Man.	Sask.	Alta.	B.C.
1998 - '99	97,557	24,146	160,011	129,131	1,250,248	2,111,622	192,630	194,797	543,387	629,545
1999 - '00	94,118	24,089	158,205	127,003	1,247,757	2,131,626	197,067	192,885	546,402	628,265
2000 - '01	90,287	23,153	155,873	124,942	1,237,981	2,143,599	189,912	190,711	549,633	625,074
2001 - '02	87,019	22,843	153,450	122,792	1,244,689	2,163,108	188,907	186,518	548,122	622,838
2002 - '03	84,397	22,615	150,599	120,600	1,245,334	2,164,940	186,892	182,687	551,375	613,235
2003 - '04	81,545	22,239	148,514	118,869	1,241,139	2,129,742	186,287	178,932	549,533	605,543
2004 - '05	79,503	22,393	145,396	117,145	1,233,053	2,123,904	184,352	176,069	550,983	596,174

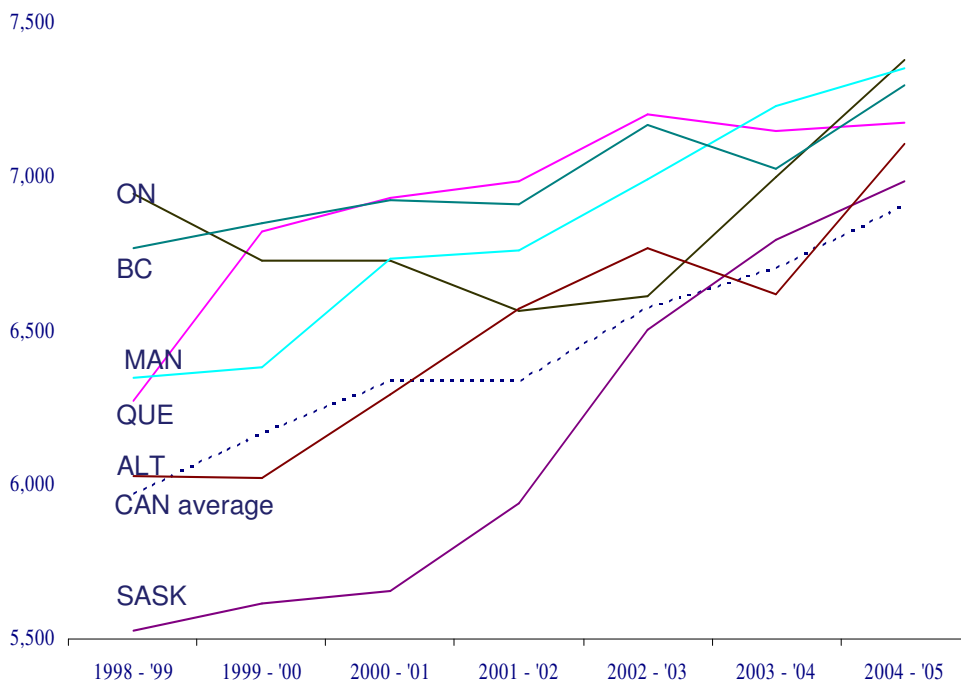


Summary Public School Indicators for the Provinces and Territories, 1998/1999 to 2004/2005 (cont)



Total expenditures per K-12 student

Extracted from Table 16b



Note:

1. in 1992 constant not current dollars
2. Canadian average of provinces only.
3. NWT, Nunavut and Yukon not included. Their costs are significantly different for reasons that are unique to their regions

Year	CAN	P.E.I.	N.S.	N.B.	N.L.	Que.	Ont.	Man.	Sask.	Alta.	B.C.
1998 - '99	5,970	5,181	5,237	6,042	5,354	6,270	6,941	6,349	5,529	6,030	6,765
1999 - '00	6,162	5,440	5,736	6,447	5,577	6,825	6,726	6,378	5,616	6,024	6,852
2000 - '01	6,335	5,676	6,881	5,969	5,560	6,929	6,726	6,736	5,653	6,296	6,922
2001 - '02	6,337	5,329	5,922	6,231	6,150	6,988	6,565	6,763	5,940	6,568	6,911
2002 - '03	6,572	6,116	5,829	6,195	6,331	7,200	6,614	6,991	6,503	6,769	7,169
2003 - '04	6,703	6,179	5,802	6,672	6,557	7,148	6,998	7,229	6,795	6,621	7,028
2004 - '05	6,904	6,091	6,129	6,955	6,570	7,177	7,378	7,350	6,985	7,107	7,297

K-12 Capital expenditures

in millions of current dollars

Extracted from Table 14

Year	Canada	N.L.	P.E.I.	N.S.1	N.B.	Que.	Ont.	Man.	Sask.	Alta.	B.C.
98-'99	2,494.70	11.2	10	18.9	26.1	448.3	1,253.10	48	8.3	192.8	438.5
99-'00	2,782.80	19.8	10.3	60	45.5	448.7	1,415.90	65.7	10.9	179.1	499.5
00-'01	3,147.30	9.7	8.7	302.5	40.6	504.6	1,503.70	72.4	12.8	233	442.5
01-'02	2,907.60	21.7	6.8	111	47.3	499.1	1,418.20	64.3	14.2	315.3	358.5
02-'03	2,845.90	8.8	13.1	92.8	34.3	582.2	1,279.30	65.2	68.32	343.2	328
03-'04	2,833.90	8.0	11.1	75.7	41.6	461.9	1,542.40	73	74.2	302	207.7
04-'05	3,065.40	10.6	5.7	60.5	59	485.2	1,799.30	59.3	81	266.8	206.9

K-12 Operating expenditures

in millions of current dollars,

Extracted from Table 13b

Year	Canada	N.L.	P.E.I.	N.S.	N.B.	Que.	Ont.	Man.	Sask.	Alta.	B.C.
98-'99	32,078.80	537.6	122.6	851.9	712.4	6,607.60	13,630.10	1,247.20	1,120.40	3,203.80	3,832.70
99-'00	32,773.80	539.3	130.3	913	746	7,289.50	13,405.30	1,295.40	1,152.00	3,331.00	3,824.50
00-'01	33,909.40	541.3	138.1	904.2	700.4	7,493.80	13,843.30	1,347.40	1,182.10	3,606.90	3,990.60
01-'02	35,121.40	571.4	132.7	936.2	729.7	7,760.00	14,167.50	1,393.50	1,260.20	3,788.10	4,128.00
02-'03	36,787.00	598	149.7	953.9	750.9	8,079.3e	14,745.40	1,451.80	1,333.70	4,072.80	4,382.90
03-'04	38,247.50	616.7	156.4	990.2	834.7	8,295.60	15,507.80	1,520.20	1,394.70	4,200.00	4,448.90
04-'05	40,247.40	609.8	164.1	1,062.80	861.5	8,411.8e	16,507.80	1,576.10	1,435.80	4,657.00	4,666.80